



## Accommodation Details

### General information

Accommodation name	HOTEL VISCARDO
Typology	Hotel
Address	Via Cesare Battisti, 4
City	Forte dei Marmi (Lu)
Contacts	tel +39.0584.787188 - <a href="mailto:info@hotelviscardo.it">info@hotelviscardo.it</a>
Website	<a href="https://www.hotelviscardo.it/">https://www.hotelviscardo.it/</a>
Online bookings	On your website

TESTATO DA: [Handy Superabile Social Promotion Association](#) in summer 2023

**Please note** The following information refers to the date of verification shown at the bottom of each sheet. **The Association** is not responsible for any significant changes made by the property after the visit.

### Summary

Accommodation Details .....	1
General information .....	1
Arrival at the property.....	2
How to reach the property.....	2
Route from the car park to the entrance .....	4
Entrance to the structure.....	5
Hall - Reception .....	6
Rooms/apartments .....	7
Rooms/apartments adapted for guests with reduced mobility.....	7
Toilets in the room/apartment adapted for guests with reduced mobility .....	8
Bar/Restaurant.....	10
Internal routes and common services .....	12

Project carried out with the contribution of the





Internal routes.....	12
Communal toilets .....	13
Swimming pool .....	13
Medical practices/healthcare facilities.....	13

## Arrival at the property

### How to reach the property

By car	<ul style="list-style-type: none"> <li>FROM GENOA: A12 motorway southbound Versilia exit.</li> <li>FROM MILAN: A1 motorway southbound near Parma take the A15 to La Spezia where you take the A12 southbound to the Versilia exit.</li> <li>FROM FLORENCE: Take the A11 Firenze-Mare motorway to Lucca, then take the motorway link road to Viareggio heading north to the Versilia exit.</li> <li>FROM ROME: A1 motorway to Florence then take the A11 to Lucca, then take the motorway link road to Viareggio northbound until the Versilia exit.</li> </ul> <p>From the Versilia exit, follow the signs for Forte Dei Marmi</p>
By plane	<p>The nearest airport is the G. Galilei airport in Pisa which is about 45 km away. At the airport, the disembarkation/disembarkation of passengers with reduced mobility is carried out with ambulift, a special vehicle</p>

Project carried out with the contribution of the





	<p>equipped with a ramp - mobile lounge - with an elevating platform to facilitate the boarding of passengers in wheelchairs; they are also guaranteed full assistance on departure/arrival.</p> <p>The assistance staff is available to accompany the passenger with a disability, during the delivery of the baggage, to the boarding gate or baggage claim.</p> <p>The terminal is equipped with lifts equipped with external and internal buttons in Braille and columns "for call assistance" (see photo above on the right). The security checkpoints are designed to accommodate passengers with wheelchairs and people with pacemakers.</p> <p>In the external and internal paths there are LOGES paths complete with tactile maps to facilitate the movement of blind and visually impaired people</p> <p>In the internal areas of the airport there are very spacious toilets equipped for people with reduced mobility. The toilet is equipped with grab bars, fixed to the wall on one side and reclining on the other side. The washbasin with lever tap has enough space for approaching the wheelchair.</p> <p>For the transfer from the airport it is possible to rent a vehicle adapted for driving, with hand controls.</p>
<p>By train</p>	<p>Railway station. Querceta / Seravezza (distance 5 km) and does not provide assistance service for passengers with disabilities while this service is available in the stations of Massa and Viareggio, respectively 11 and 18 km away.</p>





By public transport	Line E1 <b>Forte dei Marmi</b> - Marina di Carrara should be equipped with <b>vehicles</b> with a lowerable platform for wheelchair access
---------------------	--

**Route from the car park to the entrance**

Presence of private parking	YES
Type of private parking fund	Tiled
Presence of parking space reserved for people with disabilities in the private parking lot	NO
Public parking nearby	YES
Type of public parking floor	Asphalt
Presence of parking space reserved for people with disabilities in the public parking lot	YES
Describe the route from the car park to the entrance and any critical issues	From the car park, the hotel is accessed via a secondary path with a 2-leaf door and a step.





**Entrance to the structure**

Access to the facility	Through 2 steps that can be overcome through 2 L-shaped ramps, on the left side of the building, with a total length of 460 cm, width 122 cm and slope 8%
Type of front door	Outward-opening swing door with lever handle
Useful width of door/entrance gate	120 cm with 6 cm door knocker step
There are indicators and tactile maps	NO
Notes	
	





### Hall - Reception

How to reach it from the entrance	Flat
Reception desk height	115 cm
Presence of multilingual staff	YES
Type of information material	brochure
Initial assistance is provided for visitors with disabilities	YES
The following aids are provided for visitors with disabilities	Not detected
The staff followed a training course on welcoming people with different disabilities	NO
Notes	





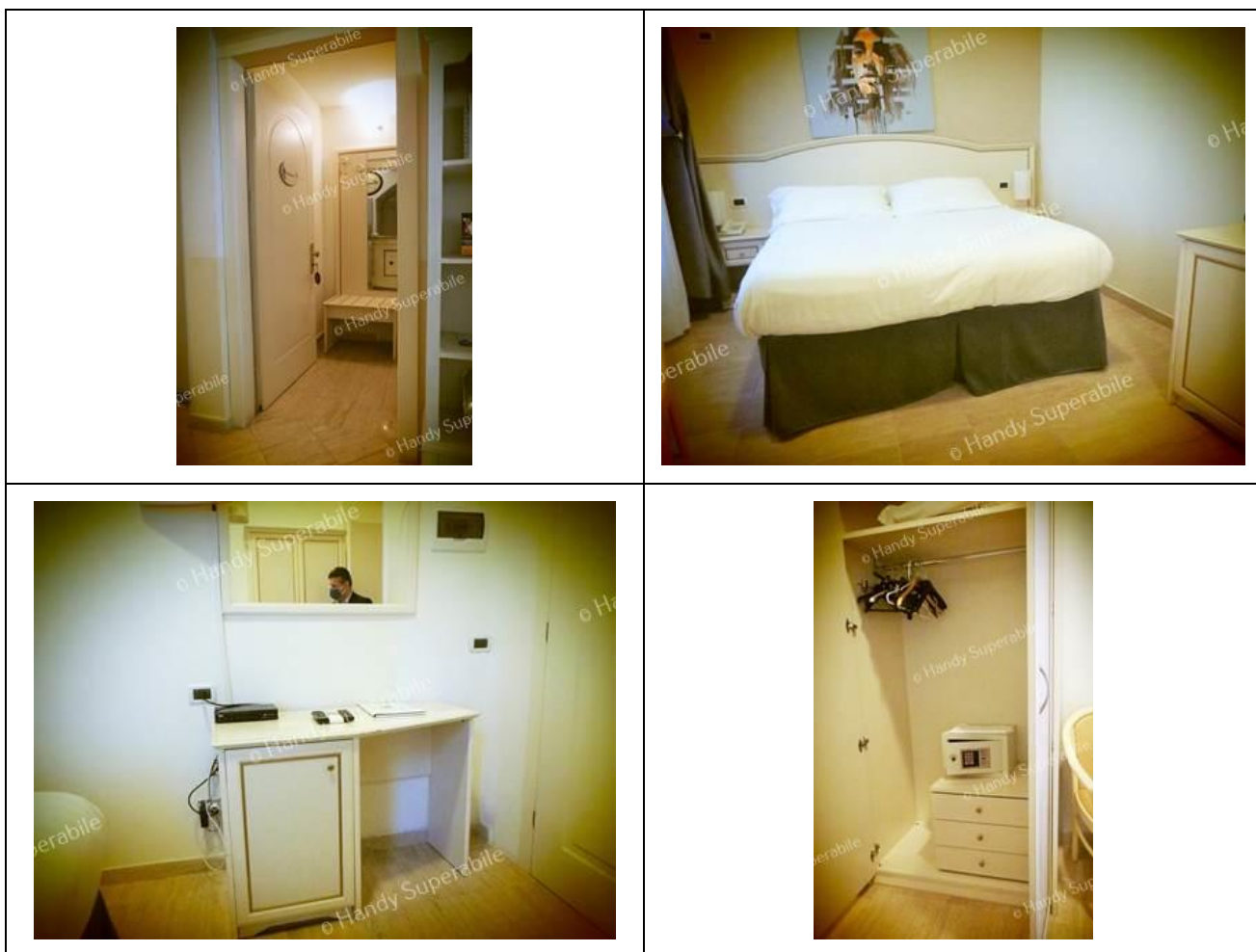
	<p>Elegantly furnished lobby and welcoming</p>
--	--

### Rooms/apartments

#### Rooms/apartments adapted for guests with reduced mobility

Number of rooms/apartments available	26
Number and type of rooms equipped/usable by people with reduced mobility	2 double rooms
Room access	Flat
Type of front door	Swing door with lever handle
Usable width of the entrance door	Double door of 86 and 85 cm
Bed type	matrimonial
Free spaces on the sides of the bed	right 35 cm left 70 cm front >90 cm
Cabinet Type	With doors with coat hanger 150 cm from the floor and safe for wheelchair users
Free space under the desk	75 cm
There is a terrace/balcony/garden (accessibility)	Not detected
Notes	<b>Anemone double room visited</b> is accessible on the floor and is located on the ground floor in front of the reception







**Toilets in the room/apartment adapted for guests with reduced mobility**

Access to the premises	Flat
Type of front door	Door opening outwards
Usable width of the entrance door	80 cm
Toilet height	43 cm
Toilet seat with open front tooth	NO
Support handles	To the right of the toilet
Flexible shower on the side of the toilet	NO

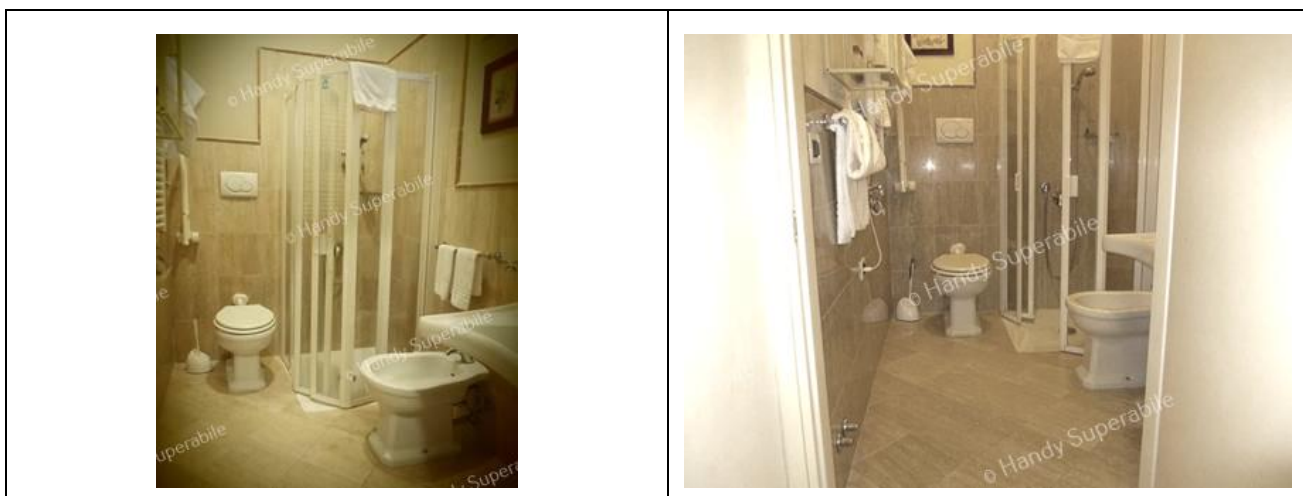
Project carried out with the contribution of the





Free space on the sides of the toilet	Left 87 cm Right 27 cm Front > 100 cm
Electric doorbell/telephone	Not detected
Washbasin with space underneath for wheelchair approach	67 cm
Height from the ground lower edge mirror	Greater than 100 cm and not usable by people in wheelchairs
Height from the ground hair dryer	130 cm
	
<b>Accessible shower</b> available for guests with reduced mobility	YES
Type of shower	With folding box
Floor-level shower	YES
Shower chair	Missing
Support handle	Missing
Presence of shower head or sliding rails	Up and down with the lowest point reachable by a person in a wheelchair
Electric doorbell/telephone	YES





**Bar/Restaurant**

Type of venue	Breakfast bar
Access to the premises	Flat
Useful width of door/entrance gate	No door with a 90 cm > opening
Bar counter height	116 cm
Types of tables	4-legged and with central foot
Space under floor tables	The first 74 cm and the second 72 cm
Multilingual menu	YES
Large print menus	NO
Braille menu	NO
Table service for people with disabilities	YES
Availability of foods for celiacs	NO
The restaurant has an outdoor veranda / dehors	YES in a lovely flower garden



Project promoted by



**Regione Toscana**



Project carried out with the contribution of the




**Presidenza del  
Consiglio dei Ministri**  
Ministro per la disabilità



## Internal routes and common services

### Internal routes

<p>Indicate whether the common area connection routes are flat or with ramps, in addition to those already described</p>	<p>The main common areas are accessible on the floor (hall, breakfast room, reception) while one of the rooms visited and the Jacuzzi can be reached via an elevator with a 74 cm wide sliding door</p>
	<p>The elevator car has dimensions of 85 X 112 cm and the highest key on the keyboard, in relief, is 117 cm from the ground. Call button 112 cm high from the ground, embossed and in Braille</p>





### Communal toilets

Location of the venue	Breakfast bar room
Access to the premises	Flat
Type of front door	Double leaf door with lever handle
Usable width of the entrance door	86 and 76 cm
Toilet height	52 cm
Toilet seat with open front tooth	YES
Support handles	To the right of the toilet
Flexible shower on the side of the toilet	NO
Free space on the sides of the toilet	Left 31 cm Right > 100 cm Front 76 cm
Electric doorbell/telephone	YES
Washbasin with space underneath for wheelchair approach	Above 65 cm
Height from the ground lower edge mirror	Greater than 130 cm and not usable by a guest in a wheelchair

### Swimming pool

The property has a swimming pool	Not present
----------------------------------	-------------

### Medical practices/healthcare facilities

Hospitals near the property	<b>Ospedale Versilia</b> SS 1, 335, 55049 Camaiole LU Telephone: 0584 6051
-----------------------------	---





Other healthcare facilities	<p><b>ASL Health District No. 12</b> Viareggio Via Sant'Elme, 30 Tel. 058483873</p> <p><b>Croce Verde</b> Viale Italico, at the corner of via Risorgimento Tel. 058484013 Free First Aid for white codes <b>Night medical service</b> Tel. 0584 83896 (h. 20-8)</p> <p><b>Misericordia</b> Via P. I. da Carrara, 32 Tel. 0584752133/0584 752149</p> <p><b>Medical service "San Camillo" nursing home</b> Via P.I. da Carrara, 37 Tel. 0584 7391</p> <p><b>Dialysis service</b> c/o Croce Verde Viale Italico, ang. via Risorgimento Tel.058484013 affiliated with AUSL</p>
-----------------------------	--

TESTED BY: **Handy Superabile Social Promotion Association in summer 2023**

